



LANE ESD

2019 WINTER/SPRING EVENTS

JANUARY

MATH ESSENTIAL SKILLS | JAN 15, 4:00PM-6:00PM @ LANE ESD: During this GoToMeeting video conferencing session, participants will learn about the math scoring guide and calibrate their scoring with other participants from the comfort of their own home or school. Sign up on the LESD website. Contact mahern@lesd.k12.or.us for more information.

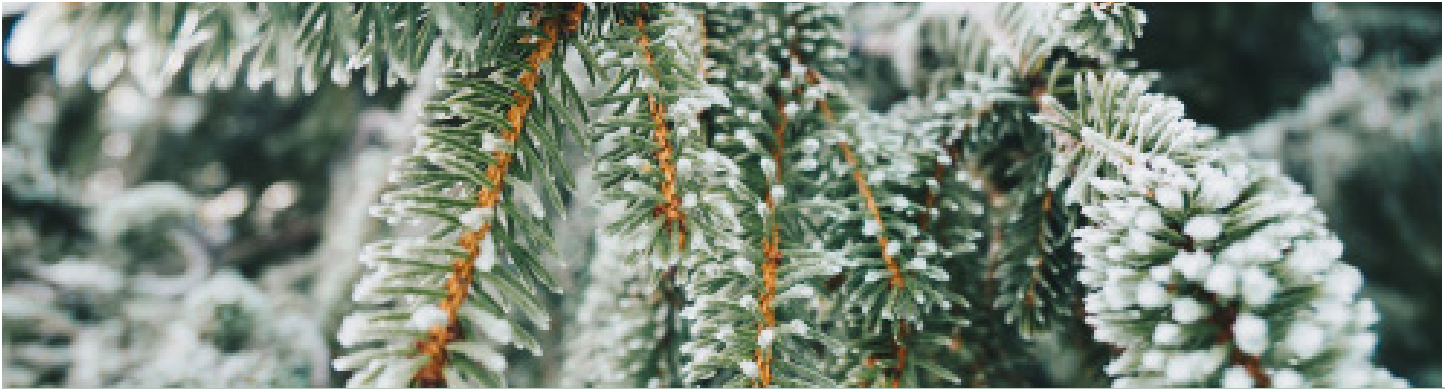
HIGH EXPERTISE TEACHING MODULE 2A: ESSENTIAL ELEMENTS OF PLANNING AND LESSON DESIGN | JAN 15, 8:30AM-3:30PM @ LANE ESD: In this three-day training participants apply planning decisions, mastery objectives, and use five levels of thinking to guide lesson planning. Formative assessment tools, criteria for success, and effective feedback are designed to align with planning. Module 1 is a prerequisite. This module continues January 29 and February 26. Sign up at <http://www.lesd.k12.or.us/sst/index.html> For questions contact moakes@lesd.k12.or.us.

ASSESSMENT FOR THE NGSS | JAN 16, 8:30AM-3:30PM @ LANE ESD: The new Oregon State Science Assessment will be implemented this year. Take this opportunity to delve into the blueprints of this assessment, reflect on classroom assessment practices, and examine free resources to help align your classroom assessments with NGSS. Sign up on the LESD website. Contact hrebar@lesd.k12.or.us for more information.

HIGH EXPERTISE TEACHING MODULE 5: USING PRINCIPLES OF LEARNING TO MAXIMIZE STUDENT ENGAGEMENT AND ACHIEVEMENT | JAN 16, 8:30AM-3:30PM @ LANE ESD: This one-day course is designed to explore 10 principals of learning that can be strategically applied to most learning experiences with the goal of increasing the effectiveness and efficiency of the lesson. Module 1 is a prerequisite. Sign up at <http://www.lesd.k12.or.us/sst/index.html> For questions contact moakes@lesd.k12.or.us.

HIGH EXPERTISE TEACHING MODULE 1: THE KNOWLEDGE BASE OF TEACHING | JAN 17, 8:30AM-3:30PM @ LANE ESD: This module is an overview of the organization of the knowledge base as it is described in The Skillful Teacher text. This is a prerequisite for all additional HET trainings. Sign up at <http://www.lesd.k12.or.us/sst/index.html> For questions contact moakes@lesd.k12.or.us.

HIGH EXPERTISE TEACHING MODULE 4: HIGH EXPECTATIONS TEACHING | JAN 30, 8:30AM-3:30PM @ LANE ESD: Participants will investigate how our beliefs about ability influence our behavior and the messages we send to students about their intellectual capacity. We will also examine the opportunities to influence student confidence and conviction that each has plenty of ability to learn rigorous material. Module 1 is a prerequisite. This module continues March 7 and April 18. Sign up at <http://www.lesd.k12.or.us/sst/index.html> For questions contact moakes@lesd.k12.or.us.



FEBRUARY

HIGH EXPERTISE TEACHING MODULE 2A: ESSENTIAL ELEMENTS OF PLANNING AND LESSON DESIGN | FEB 7, 8:30AM-3:30PM @ LANE ESD: In this three-day training participants apply planning decisions, mastery objectives, and use five levels of thinking to guide lesson planning. Formative assessment tools, criteria for success, and effective feedback are designed to align with planning. Module 1 is a prerequisite. This module continues March 6 and April 10. Sign up at <http://www.lesd.k12.or.us/sst/index.html> For questions contact moakes@lesd.k12.or.us.

IMPLICIT BIASES | FEB 14, 4:00PM-6:00PM @ LANE ESD: Reach Higher of Lane County presents Crystal Persi, educational consultant, to explore how your personal traits and experiences alter your ability to meet the diverse needs of students and families you support. This professional development is geared toward counselors and career/college student support staff. Contact Cassadie Ross at cross@lesd.k12.or.us for more information.

HIGH EXPERTISE TEACHING MODULE 2B: FORMATIVE ASSESSMENT: A PROCESS FOR IMPACTING STUDENT ACHIEVEMENT | FEB 20, 8:30-3:30 @ LANE ESD: This two-day module extends the foundations established in Module 2A: Essential Elements of Planning and Lesson Design. Utilizing a four-step cycle participants will learn how to actively engage students with clear learning objectives and success criteria, infuse formative assessment into daily instruction, analyze results, and take action in response to the data. Day 2 is scheduled for 3/12/2019. Sign up at <http://www.lesd.k12.or.us/sst/index.html> For questions contact moakes@lesd.k12.or.us.

MATH CIRCLE | FEB 21, 4:30PM-6:30PM @ ECCO AT LANE COMMUNITY COLLEGE: Come solve math problems in a fun and supportive environment. Mathematicians pose creative problems for a community of learners to solve. Teachers/Educators in grades K-12 welcome! Contact mahearn@lesd.k12.or.us for more info.

TOWN HALL SYMPOSIUM | FEB 21, 9:00AM-2:00PM @ EUGENE CHRISTIAN FELLOWSHIP: High School Kids give their perspective and concerns in a community forum. Students sign up at their schools. Permission slips and flyers will go out the last week of January. Buses will take students from school to the event and back to the school. Lunch is provided. Contact Jason Floyd jfloyd@lesd.k12.or.us for more information.

NUMBER TALKS | FEB 26, 3:30PM-5:30 @ BETHEL SCHOOL DISTRICT: Number Talks is a 5-15 minute math fluency routine that develops students number sense, mathematical reasoning and identity as a mathematician. Contact mahearn@lesd.k12.or.us for more info.

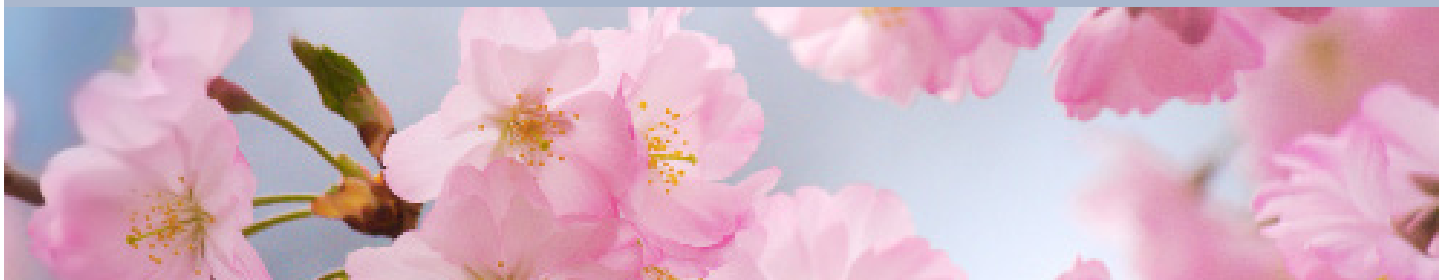
MARCH

THE GLOBE PROGRAM | Free online courses for teachers through LCC on integrating Citizen Science into your curriculum. Math connections abound! Go to <http://www.lanec.edu/science/globe-program> for more information and sign up or contact mahearn@lesd.k12.or.us for more info.

HIGH EXPERTISE TEACHING MODULE 2 B: FORMATIVE ASSESSMENT: A PROCESS FOR IMPACTING STUDENT ACHIEVEMENT | MAR 13, 8:30AM-3:30PM @ LANE ESD: This two-day module extends the foundations established in Module 2A: Essential Elements of Planning and Lesson Design. Utilizing a four-step cycle participants will learn how to actively engage students with clear learning objectives and success criteria, infuse formative assessment into daily instruction, analyze results, and take action in response to the data. Day 2 is scheduled for 4/9/2019. Sign up at <http://www.lesd.k12.or.us/sst/index.html> For questions contact moakes@lesd.k12.or.us.

PHYSICS NGSS PD: PATTERNS APPROACH AND CURRICULUM | DATE AND TIME TO BE DETERMINED: In this 2-day workshop, teachers will be introduced to the curriculum and approach to teaching Patterns Physics NGSS Curriculum, which is a (free) open-source curriculum developed by science teachers and curriculum specialists at Beaverton School District. This workshop will serve as the introductory workshop that will continue in summer and 2019-2020 school year. The Patterns Curriculum is currently taught in 17 school districts in Oregon, and 30% of students in Oregon are currently taking one science course in the Patterns curriculum series. Physical Science teachers are also invited to this workshop. Watch the Lane ESD website for further information or contact Heidi Rebar hrebar@lesd.k12.or.us for details.

BIOLOGY NGSS PD WORKSHOP: PATTERNS APPROACH HIGH SCHOOL SCIENCE CURRICULUM SEQUENCE | DATE AND TIME TO BE DETERMINED: In this 2-day workshop, teachers will be introduced to the curriculum and approach to teaching Patterns Biology NGSS Curriculum, which is a (free) open-source curriculum developed by science teachers and curriculum specialists at Beaverton School District (see curriculum link: <https://sites.google.com/a/beaverton.k12.or.us/biology11/>). This workshop will serve as the introductory workshop that will continue in summer and 2019-2020 school year. The Patterns Curriculum is currently taught in 17 school districts in Oregon, and 30% of students in Oregon are currently taking one science course in the Patterns curriculum series. For more information about this curriculum, please see: <https://www.pdxstem.org/hs-science/>. Watch the Lane ESD website for further information or contact Heidi Rebar hrebar@lesd.k12.or.us for details.



APRIL

HIGH EXPERTISE TEACHING MODULE 3: MAKING STUDENT THINKING VISIBLE | APR 4, 8:30AM-3:30PM @ LANE ESD: This three-day training is an in-depth study of what it takes to transform the classroom from one where the teacher does most of the talking to one where students are at the center of productive dialogue and discussion. Module 1 is a prerequisite. This module continues May 2 and May 22. Sign up at <http://www.lesd.k12.or.us/sst/index.html> Contact moakes@lesd.k12.or.us for more info.

ELEVATE LANE COUNTY JOB FAIR FOR GRADUATING SENIORS | APR 11 9:00AM-3:00PM @ BOB KEEFER CENTER, SPRINGFIELD: Elevate Lane County invites 1,500 graduating seniors to come prepared to meet with 50 potential employers from varying industries. For more information go to the Elevate Lane County' website @ <https://elevatelanecounty.org/calendar/> or contact Lizzie Gray lgray@lesd.k12.or.us

CTE/STEM YOUTH AND EQUITY SUMMIT | APR 17 8:00AM-11:30AM @ THE DOWNTOWN EUGENE HILTON HOTEL: Excellence through equity. Keynote by Dr. Pedro Noguera: Creating Conditions for Great Teaching and Learning that lead to student engagement, student empowerment, and student voice. Student representatives of the Youth STEM Equity Council (Junction City, North Eugene, Churchill, Elmira and Willamette) will engage in dialog with Dr. Noguera in a panel presentation style. Guiding question: What are some ways that as educators we can increase the participation and success of under-represented students in STEM/CTE and other nontraditional career preparation programs? For more information contact Shareen Vogel svogel@lesd.k12.or.us

OREGON ACTE 2019 ANNUAL CONFERENCE | APR 18-19 @ THE HOTEL EUGENE: Come learn more about Perkins V, CTE Programs of Study, Grant Writing for CTE Equipment, CTE+STEM=Good Teaching, Career Technical Student Organizations and CTE Advisory Committees. More than 90 Cluster-Specific and General Sessions Available. For questions contact Shareen Vogel svogel@lesd.k12.or.us. To register for the conference go to the Oregon ACTE website @ <https://www.acteonline.org/oregon-2019/#toggle-id-2>

ELEVATE LANE COUNTY EXPERIENCE OREGON HEALTH | APR 25, 9:00AM-1:00PM, LOCATION TO BE DETERMINED: High school students with an interest in exploring careers in the medical field are invited to join us on a tour of a local hospital. For more information go to the Elevate Lane County' website @ <https://elevatelanecounty.org/calendar/> or contact Lizzie Gray lgray@lesd.k12.or.us

